

# GalaChain SDK Docs

---

## Table of contents

---

1. GalaChain SDK	4
1.1 Features	4
1.2 Working with GalaChain	4
1.3 Deploying chaincode to GalaChain	4
1.4 Galachain post deployment	4
1.5 Reference documentation	4
1.6 Documentation in PDF format	4
2. GalaChain	5
2.1 What is GalaChain?	5
2.2 Why is GalaChain?	5
2.3 What kind of technology is GalaChain?	5
2.4 When is GalaChain?	5
2.5 Where do nodes come in?	5
2.6 How fast is GalaChain?	5
2.7 GalaChain for Publishers	5
2.8 GalaChain for Developers	6
3. Getting started	7
3.1 Local Environment (Linux, MacOS, or Windows with WSL)	7
3.2 Using Dev Containers (Linux or MacOS)	8
3.3 Use Docker file + Dev Containers (Linux, MacOS or Windows)	9
4. Chaincode development	10
4.1 Contract classes	10
4.2 Transaction decorators	11
4.3 Transaction context	11
4.4 Authentication and authorization	12
4.5 DTO types	13
4.6 Objects saved on chain	13
4.7 Error handling	14
4.8 State cache	15
4.9 Prevent duplicate calls	15
5. Chaincode Client	16
5.1 Hyperledger Fabric Client	16
5.2 REST API Client	17
5.3 Builder and actual client	18
5.4 Extending the client API	18

6. Testing your chaincode	19
6.1 Unit testing	19
6.2 Integration testing	21
7. Chaincode deployment	25
7.1 The process	25
7.2 Reference	25
8. Chaincode Post Deployment	28
8.1 How to create keys	28
8.2 How to generate a new encryption key	28
8.3 How to create a new curator user	28
8.4 How to save the generated public key for the new curator user	28
8.5 How to add the new curator user as an authority on a token	29
8.6 How to sign a DTO	29
9. Hackathon	30
9.1 Deploy	30
9.2 Hackathon	32
9.3 Schedule	32
9.4 Rules	32
9.5 Prizes	32
9.6 Atmosphere	32
9.7 Getting Started	32

# 1. GalaChain SDK

---

Welcome to developing with GalaChain! GalaChain is a layer 1 blockchain designed to be the foundation of Web3 Gaming, Entertainment and more.

## 1.1 Features

---

- Utility libraries to allow seamless development of chaincodes
- Local development environment with hot code reload and local block browser
- Easy start with chaincode template
- Integration with GalaChain

Read more about [GalaChain](#).

## 1.2 Working with GalaChain

---

- **Getting started guide**
- [Chaincode development](#)
- [Chaincode client](#)
- [Chaincode testing](#)

## 1.3 Deploying chaincode to GalaChain

---

- [Chaincode deployment](#)

## 1.4 Galachain post deployment

---

- [Chaincode post deployment](#)

## 1.5 Reference documentation

---

- [chain-api](#) - Common types, DTOs (Data Transfer Objects), APIs, signatures, and utils for GalaChain
- [chain-client](#) - GalaChain client library
- [chain-test](#) - Unit testing and integration testing for GalaChain
- [chaincode framework](#) - Framework for building chaincodes on GalaChain

## 1.6 Documentation in PDF format

---

- [PDF file](#)

## 2. GalaChain

---

### 2.1 What is GalaChain?

---

GalaChain is a layer 1 blockchain designed to be the foundation of Web3 Gaming, Entertainment and more.

### 2.2 Why is GalaChain?

---

When [Gala Games](#) began integrating blockchain technology with games, we quickly realized that existing blockchain technology was not built to support the kinds of functionality that players and developers desired in Web3 gaming. We set out on a quest to build something different. As Gala has evolved, we recognize even more Web3 use cases that GalaChain is perfect for. We're building a foundation for Web3 Gaming, Entertainment and beyond.

### 2.3 What kind of technology is GalaChain?

---

The core technology that GalaChain is built on is [Hyperledger Fabric](#). We have built infrastructure and code to add capabilities to easily onboard games and users. Now it's very straightforward to write contracts using typescript. We've also created a Token contract that can be implemented in any channel. This immediately gives the channel access to native Token operations such as transfer, mint, allowances, swapping, lending, and more.

### 2.4 When is GalaChain?

---

Now! GalaChain has already been integrated into live products including SpiderTanks, Music, PokerGO, and Champions Arena. Many more are being onboarded in preparation for launch. Additionally, we're working incrementally toward broader public access and participation.

### 2.5 Where do nodes come in?

---

We've got a lot of ideas about that! The first GalaChain workload that will be on nodes is likely to be one that helps perform bridge transaction verifications. More info coming soon!

### 2.6 How fast is GalaChain?

---

Super-fast (or slow). One of the cool features of GalaChain is that each channel can be configured for different performance options. Maybe your product wants to drop big chunks of data in each block and there's time between transactions, or you could have small data, moving really fast. It's configurable! We typically don't talk about tx/s simply because it's relative to the use case and so one data point may not be useful for everyone.

### 2.7 GalaChain for Publishers

---

- Managed end-to-end blockchain solution
- Managed infrastructure
- Framework to lower chaincode development costs
- Basic token features out of the box
- Monetization with fees
- Built in bridge

## 2.8 GalaChain for Developers

---

- A framework and a set of tools for easy chaincode development
- Open Source SDK, battle tested at Gala
- Local development tools
- Standardized and documented REST API
- Testnet and Mainnet
- CLI to manage the whole development cycle

## 3. Getting started

---

### 3.1 Local Environment (Linux, MacOS, or Windows with WSL)

---

If you are using Windows with WSL don't forget to enable integration with WSL on Docker Desktop.

#### 3.1.1 Requirements

You need to have the following tools installed on your machine: - Node.js 16+ - Docker and Docker Compose - [jq](#) and [yq](#)

#### 3.1.2 1. Install our CLI

```
npm i -g @gala-chain/cli
```

Check the CLI:

```
galachain --help
```

#### 3.1.3 2. Initialize your project

```
galachain init <project-name>
```

It will create a sample project inside `<project-name>` directory.

Install all dependencies:

```
npm i
```

#### 3.1.4 3. Start the network

```
npm run network:start
```

The network will start in hot-reload/watch mode, so leave the prompt with logs running and execute the following commands in a new prompt.

#### 3.1.5 4. Run integration tests

Now you can run integration tests with:

```
npm run test:e2e
```

#### 3.1.6 5. Verify changes in block browser and GraphQL

Navigate to <http://localhost:3010/blocks> to see our block browser which allows you to see what's saved on your local GalaChain network.

Navigate to <http://localhost:3010/graphql> to interact with GraphQL and execute queries.

#### 3.1.7 6. Next steps

- [Iterate on your chaincode](#)
- [Get familiar with GalaChain SDK](#)
- [Deploy chaincode to gc-testnet](#)

## 3.2 Using Dev Containers (Linux or MacOS)

### 3.2.1 Requirements

- [VSCode](#)
- [Dev Containers Extension](#)
- Node.js
- Docker

#### 3.2.2 1. Install our CLI

```
npm i -g @gala-games/chain-cli
```

Check the CLI:

```
galachain --help
```

#### 3.2.3 2. Initialize your project

```
galachain init <project-name>
```

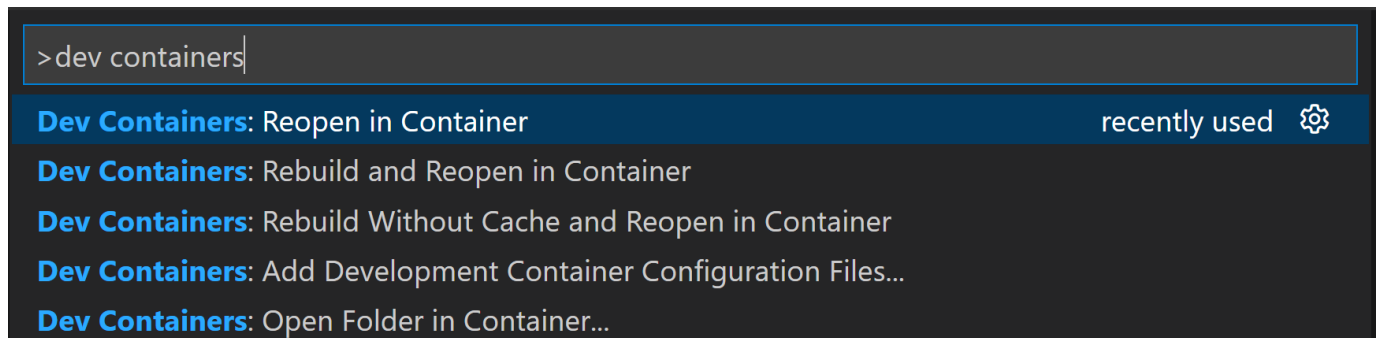
It will create a sample project inside `<project-name>` directory.

Open the directory on VSCode.

```
cd <project-name>
code .
```

#### 3.2.4 3. Open in a Dev Container

While in VSCode, press F1 to open the Command Palette and search for `Dev Containers: Reopen in Container`



You can also click on the Remote Indicator in the status bar to get a list of the most common commands.





### 3.2.5 4. Install dependencies and start network

---

Open a new prompt when in a Dev Container and run the commands:

```
npm install
```

```
npm run network:start
```

The network will start in dev mode, so leave the prompt with logs running and execute the following commands in a new prompt.

### 3.2.6 5. Run integration tests

---

Now you can run integration tests with:

```
npm run test:e2e
```

### 3.2.7 6. Verify changes in block browser and GraphQL

---

Navigate to <http://localhost:3010/blocks> to see our block browser which allows you to see what's saved on your local GalaChain network.

Navigate to <http://localhost:3010/graphiql> to interact with GraphQL and execute queries.

## 3.3 Use Docker file + Dev Containers (Linux, MacOS or Windows)

---

### 3.3.1 Requirements

---

- [VSCode](#)
- [Dev Containers Extension](#)
- Node.js
- Docker

#### 3.3.2 1. Install our CLI

---

```
npm i -g @gala-games/chain-cli
```

Check the CLI:

```
galachain --help
```

#### 3.3.3 2. Initialize your project

---

```
galachain init <project-name>
```

It will create a sample project inside `<project-name>` directory.

#### 3.3.4 3. Docker file and Instructions

---

Navigate to the docker folder where you can find a Docker file and instructions about how to use it.

```
cd <project-name>/docker
```

Follow the steps on the `README.md` file.

## 4. Chaincode development

---

The GalaChain SDK allows you to write Hyperledger Fabric chaincodes in TypeScript in a more convenient way, while adjusting them to the GalaChain platform.

Key features: - Contract classes - Transaction decorators - Transaction context - Authentication and authorization - DTO types - Objects saved on chain - Error handling - State cache - Recommended project structure - Tracing support

All samples in this document come from the GalaChain chaincode template. You can find the template in our source code in `chain-cli/chaincode-template` directory, or initialize it with the `galachain init` command.

### 4.1 Contract classes

---

The GalaChain SDK allows developers to write chaincodes in an object-oriented way. It reuses the concept of contract classes and contract methods from the [Hyperledger Fabric Contract API](#). Typically, a contract class is a TypeScript class that extends the `GalaContract` class from the `@gala-chain/chaincode` library. It is recommended to treat each contract class as a controller in the MVC pattern (Model, View, Controller) and minimize the logic within it.

Sample contract class:

```
import { Evaluate, GalaChainContext, GalaContract, Submit } from "@gala-chain/chaincode";
import { version } from "../../package.json";
import { AppleTreeDto, FetchTreesDto, PagedTreesDto, fetchTrees, plantTree } from "../apples";

export class AppleContract extends GalaContract {
  constructor() {
    super("AppleContract", version);
  }

  @Submit({
    in: AppleTreeDto
  })
  public async PlantTree(ctx: GalaChainContext, dto: AppleTreeDto): Promise<void> {
    await plantTree(ctx, dto);
  }

  @Evaluate({
    in: FetchTreesDto,
    out: PagedTreesDto
  })
  public async FetchTrees(ctx: GalaChainContext, dto: FetchTreesDto): Promise<PagedTreesDto> {
    return await fetchTrees(ctx, dto);
  }
}
```

`GalaContract` is a base class for all contract classes. It provides several features: - It ensures that all contract methods have access to the proper transaction context (`GalaChainContext`, see [Transaction decorators](#)). - It adds common methods for a contract: `GetChaincodeVersion`, `GetContractAPI`, `GetObjectByKey`, and `GetObjectHistory`. - It saves all writes from the GalaChain state cache to the ledger at the end of a successful transaction (see [State cache](#)). - It enhances tracing (see [Tracing support](#)).

The constructor `GalaContract` class requires two parameters: `name` and `version`. `name` is a name of the contract, and `version` is a version of the contract. Typically, you can read the version from the `package.json` file and version numbers conventionally follow the [npm / semver standards](#).

Each method of the contract class require two parameters: `ctx` and `dto`. `ctx` is a transaction context, an object that extends Hyperledger Fabric `Context` class. Aside from the standard Fabric context, it provides some additional methods and properties (see [Transaction context](#)).

The second parameter, `dto`, is an object that contains all parameters of the transaction (see [DTO types](#)).

Also, all contract methods are decorated with `@Submit`, `@Evaluate`, or `@GalaTransaction` decorators (see [Transaction decorators](#)). These decorators are required for various reasons. For instance, they allow you to properly expose the contract methods in GalaChain, deserialize and validate input parameters, normalize the response, handle authorization, etc.

## 4.2 Transaction decorators

---

Transaction decorators enhance the contract methods with various features: - They allow to properly expose the contract methods API in GalaChain. - They deserialize and validate the DTO before method is called. - They normalize the chaincode method output from any type to `GalaChainResponse`. - They handle authorization. - They can be used to ensure uniqueness of the transaction in case of duplicate calls. - They can be used to define actions that should be executed before and after the transaction.

GalaChain defines three decorator types: `@Submit`, `@Evaluate`, and `@GalaTransaction`.

- `@Submit` decorator is used for contract methods that modify the ledger state.
- `@Evaluate` decorator is used for contract methods that only read the ledger state.
- `@GalaTransaction` decorator is used for both types of contract methods, but is more verbose. It is recommended to use `@Submit` and `@Evaluate` decorators instead.

All decorators support the following parameters: - `in` - input DTO class that extends `GalaChainDto` class from `@gala-chain/chaincode` library (default: `ChainCallDto` class). This parameter is used to properly deserialize and validate the input parameters of the transaction, and to properly expose the contract method API in GalaChain. It is highly recommended to provide a custom dto class as a parameter, otherwise the validation won't work at all: There will be issues with deserialization of non-standard input parameters like nested classes, `BigDecimal` values etc. - `out` - output type of the chaincode method (default: `"null"`). It might be a string representing the type (`"number"`, `"string"`, `"boolean"`, `"null"`, `"object"`), or a custom class, or an object `{ "arrayOf": X }` where `X` is a string representing the type or a custom class. This parameter is used to properly expose the contract method API in GalaChain. - `description` - optional description of the contract method that is presented in GalaChain contract method API definition. - `allowedOrgs` - optional parameter to define which organizations are allowed to call the contract method. It is a string array with organization names. If not provided, all organizations are allowed to call the contract method. - `apiMethodName` - optional name of the contract method that should be used in the GalaChain REST API. If not provided, the name of the contract method is used. - `sequence` - optional parameter for advanced use cases. It means that the method call should actually be defined as a sequence of calls. It is useful when a GalaChain REST API call should consist of multiple calls, and each call should be executed in a separate transaction in a separate block. The sequence of calls is handled by GalaChain REST API. - `enforceUniqueKey` - ensures that DTO contain a `uniqueKey` property, which is required to prevent duplicate calls (see [Prevent attacks or bad data state from duplicate calls](#)). - `before` - optional parameter defining a function to be executed before the actual transaction (but after the authorization). - `after` - optional parameter defining a function to be executed after the actual transaction (but before the state cache is saved to the ledger).

Additionally, `@GalaTransaction` decorator supports `type` and `verifySignature` parameters. `type` can be `GalaTransactionType.SUBMIT` or `GalaTransactionType.EVALUATE` and means whether the transaction is a submit or evaluate transaction. `verifySignature` can be `true` or `false` and means whether the transaction should be verified against the signature. It is NOT recommended to use `verifySignature` as `false`, because it disables authorization for the transaction.

`@Submit` decorator is a shortcut for `@GalaTransaction({ type: GalaTransactionType.SUBMIT, verifySignature: true })`. `@Evaluate` decorator is a shortcut for `@GalaTransaction({ type: GalaTransactionType.EVALUATE, verifySignature: true })`.

## 4.3 Transaction context

---

`GalaChainContext` is an object that extends Hyperledger Fabric `Context` class. Besides from standard Fabric context, it provides some additional methods and properties:

- `callingUser` - returns standardized user id with prefix and actual name (note calling user is something different, than user in Fabric CA; see [Authentication and authorization](#)).
- `callingUserEthAddress` - returns eth address that is derived from calling user public key (see [Authentication and authorization](#)).
- `txUnixTime` - returns unix time of the transaction.
- `span` - returns tracing span of the transaction (see [Tracing support](#)).

`GalaChainContext` also changes the behavior of the `stub` property. In a standard Fabric context, the `stub` property returns a `ChaincodeStub` object. In a GalaChain context, the `stub` property returns a proxy object that wraps `ChaincodeStub` in a way to support caching (see [State cache](#)).

Finally, it adds some customization to the `logger` property.

## 4.4 Authentication and authorization

A method call requires authorization when it is marked with `@Submit` or `@Evaluate` decorator, or with `@GalaTransaction` with `verifySignature: true`.

Authorization is handled chaincode-side, on the basis of secp256k1 signature of the transaction. GalaChain recovers the public key from the signature, and derives the corresponding eth address from the public key. Then, GalaChain checks whether the eth address is registered in GalaChain as a user.

If the user is registered, `ctx.callingUser` and `ctx.callingUserEthAddress` properties are set in the transaction context. `ctx.callingUser` is a standardized user id with prefix and actual name. It may be `eth|<user-eth-address>` or `client|<user-alias>`, depending on the way the user was registered (`RegisterUser` and `RegisterEthUser` respectively).

If the user is not registered, or the signature is missing or invalid, then the transaction is rejected.

Additional notes: \* If a method is exposed but (1) does not require authorization (marked with `@GalaTransaction` with `verifySignature: false`), and (2) its DTO does not have a signature, then `ctx.callingUser` contains the Fabric CA username (`client|<ca-username>`) and executing `ctx.callingUserEthAddress` throws an exception. \* If a method is exposed, does not require authorization, and the DTO has a signature, then the regular authorization flow is performed.

### 4.4.1 Additional notes about signatures

A JSON payload to be signed is created from a DTO object without `signature` and `trace` properties, with its keys sorted alphabetically, and no end of line character(s) at the end. (Further reading as to why the must be the case can be found in the official [Hyperledger Fabric documentation](#)). Sample `jq` command to produce valid data to sign: `jq -csj "." dto-file.json`.

Also, all `BigNumber` data should be provided as strings (not numbers or directly serialized `BigNumber` objects) with fixed decimal point notation.

The EC secp256k1 signature should be created for keccak256 hash of the data. The recommended format of the signature is a HEX encoded string, including `r + s + v` values. Signature in this format is supported by `ethers` library.

Sample signature:

```
b7244d62671319583ea8f30c8ef3b343cf28e7b7bd56e32b21a5920752dc95b94a9d202b2919581bcf776f0637462cb67170828ddbcc1ea63505f6a211f9ac5b1b
```

GalaChain also supports DER encoded signatures for authorization, but since the DER signature does not contain `v` value (the recovery part), you need to additionally provide `signerPublicKey` parameter to the transaction DTO.

Sample DER signature (first line), and the corresponding `signerPublicKey` (second line):

```
3045022100b7244d62671319583ea8f30c8ef3b343cf28e7b7bd56e32b21a5920752dc95b902204a9d202b2919581bcf776f0637462cb67170828ddbcc1ea63505f6a211f9ac5b04fa7d9e30902207fd821a1518ce777e1935a45e52180d6a6339f37c3e3f759d1a64e33ed1e334070d37731f6ce3f4a5daa6ee4c9884f2186601fed892d40b2a9
```

### 4.4.2 Restricting access by organization name

You can restrict access to a contract method by organization name using `allowedOrgs` parameter of the transaction decorators. It is a string array with organization MSP names.

For example, if you want to allow only `CuratorOrg` and `FarmerOrg` to call a contract method, you can use:

GalaChain authorization will check whether the Fabric CA user which called the transaction belongs to one of the allowed organizations. Thus, the check is not related with user profile saved on chain, but related with the CA user which called the transaction.

```
@Submit({
  in: AppleTreeDto,
  allowedOrgs: ["CuratorOrg", "FarmerOrg"]
})
```

Additionally, if you don't want to hardcode the organization names in the contract code, you can use `AUTHORITY_ORG_NAME` const from `@gala-chain/chaincode` library. It takes the organization name from `AUTHORITY_ORG_NAME` environment variable (which defaults to `CuratorOrg`).

## 4.5 DTO types

We consider DTO as an object that contains all parameters of the transaction (transaction input parameters). It is passed as a second parameter to the contract method and deserialized with the use of transaction decorator `in` parameter.

Each DTO class should extend `ChainCallDTO` class from `@gala-chain/chaincode` library. It defines some additional fields that are required for GalaChain to properly handle the transaction: - `signature` - optional signature of the transaction. It is required for authorization (see [Authentication and authorization](#)). - `signerPublicKey` - optional signer public key of the transaction. It is required for authorization when the transaction is signed with DER signature (see [Authentication and authorization](#)). - `uniqueKey` - optional unique key of the transaction. It is required to prevent duplicate calls (see [Prevent duplicate calls](#)). - `trace` - optional tracing span of the transaction (see [Tracing support](#)).

Sample DTO class:

```
import { ChainCallDTO, StringEnumProperty } from "@gala-chain/api";
import { Type } from "class-transformer";
import { ArrayNotEmpty, ValidateNested } from "class-validator";

export enum Variety {
  GALA = "GALA",
  GOLDEN_DELICIOUS = "GOLDEN_DELICIOUS"
}

export class AppleTreeDto extends ChainCallDTO {
  @StringEnumProperty(Variety)
  public readonly variety: Variety;

  public readonly index: number;
}

export class AppleTreesDto extends ChainCallDTO {
  @ValidateNested({ each: true })
  @Type(() => AppleTreeDto)
  @ArrayNotEmpty()
  public readonly trees: AppleTreeDto[];
}
```

GalaChain uses `class-transformer` and `class-validator` libraries for DTO serialization and validation. It also provides some additional decorators for DTO properties, like `@StringEnumProperty`, or `@BigNumberProperty`. You should consult the documentation of these libraries, especially for more complex use cases (including but not limited to): Nested objects, arrays of objects, etc. (note decorators for `trees` property in the sample above).

Optionally, you can provide a `@JSONSchema` decorator from the `class-validator-jsonschema` library, either for whole DTO class, or for each property. It is used to generate a JSON schema for the DTO, which is used in GalaChain REST API.

## 4.6 Objects saved on chain

GalaChain uses the same validation and serialization libraries for objects saved on chain as for DTOs (`class-transformer` and `class-validator`). Accordingly, you can use the same decorators for objects saved on chain as for DTOs.

```
import { BigNumberProperty, ChainKey, ChainObjectBase, StringEnumProperty } from "@gala-chain/api";
import BigNumber from "bignumber.js";
import { IsString } from "class-validator";
import { Variety } from "../types";

export class AppleTree extends ChainObjectBase {
  static INDEX_KEY = "GCAPPL";

  @ChainKey({ position: 0 })
  @IsString()
  public readonly plantedBy: string;

  @ChainKey({ position: 1 })
  @StringEnumProperty(Variety)
  public readonly variety: Variety;

  @ChainKey({ position: 2 })
  public readonly index: number;
}
```

```
public readonly plantedAt: number;

@BigNumberProperty()
public applesPicked: BigNumber;
}
```

Aside from standard validation and serialization, GalaChain provides a `@ChainKey` decorator. It is used to define parts of the key of the object saved on chain. For instance in the sample above, the key of the object saved on chain consists of `INDEX_KEY`, `plantedBy`, `variety`, and `index` properties. Since it is build from multiple properties, it is called a composite key.

Consider you have `appleTree` which is an instance of `AppleTree` class, and you want to save it on chain. You can use `putChainObject` method from `@gala-chain/chaincode` library:

```
await putChainObject(ctx, appleTree);
```

If you want to delete it from chain, you can use `deleteChainObject` method:

```
await deleteChainObject(ctx, appleTree);
```

If you have a key of the object saved on chain (`key`), you can use `getChainObject` method to get the object from chain (`AppleTree` class is required to properly deserialize the object):

```
await getObjectByKey(ctx, AppleTree, key);
```

You can get object history with `getObjectHistory` method:

```
await getObjectHistory(ctx, key);
```

And you can check if the object exists on chain with `objectExists` method:

```
await objectExists(ctx, key);
```

Additionally, since GalaChain uses composite keys, you can get all objects with the same prefix using the `getObjectByPartialCompositeKey` method. For instance, if you want to get all gala apple trees planted by a farmer, you can use:

```
await getObjectByPartialCompositeKey(ctx, AppleTree.INDEX_KEY, ["farmer1", Variety.GALA], AppleTree);
```

There is also a relevant method that uses pagination (can be used only read-only transactions):

```
getObjectByPartialCompositeKeyWithPagination.
```

## 4.6.1 Ranged objects

GalaChain also supports ranged objects. Ranged objects do not use composite keys, so they can be used in Hyperledger Fabric range queries.

Instead of `ChainObject` class, you should use `RangedChainObject` class. Then, you can use `@ChainKey` decorator to define the key parts of the object saved on chain the same way as for `ChainObject` class. In order to put ranged object on chain, you should use `putRangedChainObject` method.

## 4.7 Error handling

We recommend handling errors with exceptions. The GalaChain SDK provides a `ChainError` class that extends the Node.js `Error` class, which additionally contains: `* code` property mapped to a corresponding HTTP code in GalaChain REST API. `* key` property which is an autogenerated string key from the error class name (for easier debugging). `* payload` property which is an optional object with additional information about the error.

The GalaChain SDK provides also several predefined error classes which contain proper `code` values: `ValidationError`, `UnauthorizedError`, `PaymentRequiredError`, `ForbiddenError`, `NotFoundError`, `ConflictError`, `NoLongerAvailableError`, `DefaultError`, `RuntimeError`, `NotImplementedError`. You may use them in your code or (preferably) create your own error classes that extend one of the predefined error classes.

When a contract method throws an error: \* no state changes are saved to the ledger; \* the error is logged; \* the error is automatically handled, so the response is always a `GalaChainResponse` object (in case of error the response object contains error properties `Status`, `Message`, `ErrorCode`, `ErrorKey`, and `ErrorPayload`); \* the transaction is saved on the ledger in transaction history.

## 4.8 State cache

---

When you get state in Hyperledger Fabric, it always returns the latest value from the ledger. When you update the state in a method, and get it again in the same method, it returns the same value as before the update. To avoid this behavior, the GalaChain SDK has a built-in state cache.

This way, when you get state in a transaction method, and update it in the same method, the second get returns the updated value.

The state cache also prevents inconsistent state in case of exceptions. Since all state changes are flushed to the ledger only at the end of a successful transaction, if an exception is thrown, the state is not updated.

## 4.9 Prevent duplicate calls

---

Accidental (or maliciously intentional) duplicate calls of some transactions could potentially lead to bad data states, spend of additional token quantities, application layer vulnerabilities, or other ill effects. To prevent this class of problems, DTOs can contain a `uniqueKey` property. It is an optional string, provided client-side, that is used to prevent duplicate calls. If the same `uniqueKey` is provided in two different transactions, the second transaction is rejected with `UniqueTransactionConflictError` error.

## 5. Chaincode Client

---

The `@gala-chain/client` package provides a client for interacting with the chaincode. Currently, it supports two client types: \* client for interacting directly with the Hyperledger Fabric network, built on top of the `fabric-network` and `fabric-ca-client` packages; \* client for interacting with the chaincode via REST API that meets the GalaChain REST API specification, used internally at GalaGames.

They share the same API, so it is easy to switch between them, depending on your needs.

Also, `@gala-chain/client` package is designed to be lightweight. This is why `fabric-network` and `fabric-ca-client` dependencies are marked as optional `peerDependencies` and should be installed separately.

### 5.1 Hyperledger Fabric Client

---

In order to connect to the Hyperledger Fabric network, you need to provide the following configuration: 1. `HFClientParams` - information containing basic information about network topology and credentials for connecting to the network; 2.

`ContractConfig` - information about the chaincode that will be used to interact with the network. 3. Optionally, a custom API specification to make the client type-safe.

#### 5.1.1 HFClientConfig

The `HFClientConfig` interface defines parameters that are required to connect to the Hyperledger Fabric network.

```
``typescript
const params: HFClientConfig = {
  orgMsp: "PartnerOrg1",
  userId: "admin",
  userPass: "adminpw",
  connectionProfilePath: path.resolve(networkRoot, "connection-profiles/cpp-partner.json")
};
```

- `orgMsp` - Hyperledger Fabric MSP name of the organization that the client will connect to;
- `userId` - id of the user in Fabric CA that will be used to connect to the network;
- `userPass` - password of the user in CA;
- `connectionProfilePath` - path to the connection profile file that describes the network topology.

Both `adminId` and `adminPass` are required to authorize the client with the network. If they are not provided, the client will try to get them from the environment variables `ADMIN_ID` and `ADMIN_PASS` respectively.

The `connectionProfilePath` should refer to a valid connection profile JSON file. For local development, you can use the connection profile provided in the `<network-root>/connection-profiles` directory of the network generated by GalaChain CLI.

#### 5.1.2 ContractConfig

The `ContractConfig` interface defines parameters that are required to interact with the chaincode.

```
const contract: ContractConfig = {
  channelName: "product-channel",
  chaincodeName: "basic-product",
  contractName: "PublicKeyContract"
};
```

- `channelName` - name of the channel that the client will connect to;
- `chaincodeName` - name of the chaincode that the client will use to interact with the network;
- `contractName` - name of the contract that the client will use to interact with the chaincode.



### 5.1.3 Creating the client

```
const client: ChainClient = gcclient
  .forConnectionProfile(params)
  .forContract(contract);
```

The client creation is a two-step process. First, you need to create a client builder instance using the `forConnectionProfile` method. Then the `forContract` method returns the actual client instance.

As a result, you get a `ChainClient` instance that can be used to interact with the chaincode. It supports `evaluateTransaction` and `submitTransaction` methods that are used to invoke chaincode functions.

After you end interacting with the chaincode, you should disconnect the client:

```
await client.disconnect();
```

Otherwise, the client will keep the GRPC connection to the network open.

## 5.2 REST API Client

The REST API client is used to interact with the chaincode via REST API, that matches the specification of managed infrastructure of GalaChain.

In order to connect to the REST API, you need to provide the following configuration: 1. `RestApiClientConfig` - information containing basic information about path mapping and credentials for connecting to the network; 2. `ContractConfig` - information about the chaincode that will be used to interact with the network. 3. Optionally, a custom API specification to make the client type-safe.

### 5.2.1 RestApiClientConfig

The `RestApiClientConfig` interface defines parameters that are required to connect to the REST API.

```
const params: RestApiClientConfig = {
  orgMsp: "CuratorOrg",
  userKey: "GC_ADMIN_CURATOR",
  userSecret: "abc",
  apiUrl: "http://localhost:3000/api",
  configPath: path.resolve(__dirname, "api-config.json")
};
```

- `orgMsp` - Hyperledger Fabric MSP name of the organization that the client will connect to;
- `userKey` - key of the user in the API key store that will be used to connect to the network;
- `userSecret` - secret of the user in the API key store;
- `apiUrl` - URL of the REST API;
- `configPath` - path to the configuration file that describes path mapping for channels, chaincodes, and contracts. Sample configuration file can be found in the `e2e` directory of the chaincode generated from template by GalaChain CLI.

### 5.2.2 ContractConfig

The `ContractConfig` interface defines parameters that are required to interact with the chaincode.

```
const contract: ContractConfig = {
  channelName: "product-channel",
  chaincodeName: "basic-product",
  contractName: "PublicKeyContract"
};
```

- `channelName` - name of the channel that the client will connect to;
- `chaincodeName` - name of the chaincode that the client will use to interact with the network;
- `contractName` - name of the contract that the client will use to interact with the chaincode.

## 5.2.3 Creating the client

```
const client: ChainClient = gcclient
  .forApiConfig(params)
  .forContract(contract);
```

The client creation is a two-step process. First, you need to create a client builder instance using the `forConnectionProfile` method. Then the `forContract` method returns the actual client instance.

As a result, you get a `ChainClient` instance that can be used to interact with the chaincode. It supports `evaluateTransaction` and `submitTransaction` methods that are used to invoke chaincode functions.

After you end interacting with the chaincode, you should disconnect the client:

```
await client.disconnect();
```

## 5.3 Builder and actual client

For all high-level operations, the client uses the `Builder` pattern: 1. first, you create a builder instance using the `forConnectionProfile` or `forApiConfig` method; 2. then you configure the builder instance using the `forContract` method.

Since all `ChainClient` builders share the same interface, you can just parametrize the builder type and use the same code for all client types, for instance:

```
const builder: ChainClientBuilder = process.env.USE_REST_API === "true"
  ? gcclient.forApiConfig(...)
  : gcclient.forConnectionProfile(...);

const client: ChainClient = builder.forContract(...);
```

## 5.4 Extending the client API

The `@gala-chain/client` package provides a default API definition that is used to make the client type-safe. By default `ChainClient` defines `evaluateTransaction` and `submitTransaction` methods that are used to interact with the chaincode. However, you can provide your own API definition, if you want to extend the client API or use a different API. The API definition is a function that accepts a `ChainClient` instance and returns an object with methods that will be added to the client.

```
function customAPI(client: ChainClient) {
  return {
    async GetProfile(privateKey: string) {
      const dto = new GetMyProfileDto().signed(privateKey, false);
      const response = await client.evaluateTransaction("GetMyProfile", dto, UserProfile);
      if (GalaChainResponse.isError(response)) {
        throw new Error(`Cannot get profile: ${response.Message} (${response.ErrorKey})`);
      } else {
        return response.Data as UserProfile;
      }
    }
  };
}
```

Now, when you enhance the client with your custom API, you can use not only default methods but also the ones that you defined:

```
const client: ChainClient = ...;
client.evaluateTransaction(...); // available
client.submitTransaction(...); // available
client.GetProfile(...); // compilation error

const extendedClient = client.extend(customAPI);
client.evaluateTransaction(...); // available
client.submitTransaction(...); // available
client.GetProfile(...); // available
```

## 6. Testing your chaincode

The GalaChain SDK includes a comprehensive set of tools in the `@gala-chain/test` package to facilitate the testing of your chaincode. This package supports both unit testing for individual contracts and integration/end-to-end testing for running networks.

### 6.1 Unit testing

The `@gala-chain/test` package offers utilities designed for straightforward unit testing of your chaincode. The recommended library for tests is [Jest](#).

#### 6.1.1 Writing unit tests

Consider a contract `AppleContract` with the following methods:

```
export class AppleContract extends GalaContract {
  public async PlantTree(ctx: GalaChainContext, dto: AppleTreeDto): Promise<void> { ... }
  public async PickApple(ctx: GalaChainContext, dto: PickAppleDto): Promise<void> { ... }
}
```

Let's create tests for the following scenarios: 1. `AppleContract` should allow to plant a tree. 2. `AppleContract` should fail to plant a tree if tree already exists. 3. `AppleContract` should allow to pick an apple.

Note: `AppleContract` with the referenced implementation and all relevant tests are available in chaincode template. You can follow the instructions in [Getting started](#) to create a new chaincode project with `AppleContract` included.

##### Test 1. `AppleContract` should allow to plant a tree

This test ensures that the `AppleContract` allows users to successfully plant a new apple tree. It validates the contract's behavior during the tree planting process.

```
import { fixture, transactionSuccess, writesMap } from "@gala-chain/test";
import { AppleTree, AppleTreeDto, Variety } from "../apples";
import { AppleContract } from "../AppleContract";

it("should allow to plant a tree", async () => {
  // Given
  const {contract, ctx, writes} = fixture(AppleContract);
  const dto = new AppleTreeDto(Variety.GALA, 1);
  const expectedTree = new AppleTree(ctx.callingUser, dto.variety, dto.index, ctx.txUnixTime);

  // When
  const response = await contract.PlantTree(ctx, dto);

  // Then
  expect(response).toEqual(transactionSuccess());
  expect(writes).toEqual(writesMap(expectedTree));
});
```

In this test, we set up the initial environment using the `fixture` utility from `@gala-chain/test`. The `fixture` contains: - `contract` -- instance of the `AppleContract` class, - `ctx` -- test chaincode context, - `writes` -- object capturing changes to the blockchain state.

Also, we define the `AppleTreeDto` instance containing details about the apple tree to be planted, and the `expectedTree` instance containing the expected object to be written to the blockchain state.

The primary action involves invoking the `PlantTree` method on the `contract` instance.

Then, we assert that the response from planting the tree aligns with the expected success result with `transactionSuccess` matcher from `@gala-chain/test`. Furthermore, we verify that the changes to the blockchain state (`writes`) match the expected modifications. Since `writes` is a map of key-value pairs, we use the `writesMap` utility from `@gala-chain/test` to get a key-value representation of the `expectedTree` instance.

### Test 2. AppleContract should fail to plant a tree if tree already exists

In this test case, we aim to verify the behavior of the `AppleContract` when attempting to plant a new apple tree that already exists. In our case a tree is considered to exist if it has the same `variety` and `index` as is planted by the same user.

```
import { fixture, transactionErrorMessageContains } from "@gala-chain/test";
import { ChainUser } from "@gala-chain/client";
import { AppleTree, AppleTreeDto, Variety } from "../apples";
import { AppleContract } from "../AppleContract";

it("should fail to plant a tree if tree already exists", async () => {
  // Given
  const user = ChainUser.withRandomKeys();

  const {contract, ctx, writes} = fixture(AppleContract)
    .callingUser(user)
    .savedState(new AppleTree(user.identityKey, Variety.GOLDEN_DELICIOUS, 1, 0));

  // When
  const response = await contract.PlantTree(ctx, new AppleTreeDto(Variety.GOLDEN_DELICIOUS, 1));

  // Then
  expect(response).toEqual(transactionErrorMessageContains("Tree already exists"));
  expect(writes).toEqual({});
});
```

In this test case, we also use the `fixture` utility from `@gala-chain/test` to set up the initial environment. However, we use the `callingUser` method to specify the user who will invoke the contract method, and we use the `savedState` method to specify the initial state of the blockchain. Also, the saved `AppleTree` instance is marked to be planted by the user who invokes the contract method (`user.identityKey` is the same as `ctx.callingUser` in this setup).

This way calling `PlantTree` method with the same `variety` and `index` will result in an error.

During validation, we assert that the response from planting the tree contains the expected error message, and no changes to the blockchain state (`writes`) are made. To assert the error we use the `transactionErrorMessageContains` matcher from `@gala-chain/test`. Other useful matchers include `transactionError` (for providing an exact error object) and `transactionErrorKey` (for providing the error key).

### Test 3. AppleContract should allow to pick an apple

In this test case, we aim to verify the behavior of the `AppleContract` when attempting to pick an apple from an existing apple tree.

```
import { fixture, transactionSuccess, writesMap } from "@gala-chain/test";
import { plainToInstance } from "class-transformer";
import { AppleTree, PickAppleDto, Variety } from "../apples";
import { AppleContract } from "../AppleContract";

it("should allow to pick apples", async () => {
  // Given
  const twoYearsAgo = new Date(new Date().getTime() - 1000 * 60 * 60 * 24 * 365 * 2).getTime();
  const existingTree = new AppleTree("client|some-user", Variety.GALA, 1, twoYearsAgo);
  const {contract, ctx, writes} = fixture(AppleContract).savedState(existingTree);

  const dto = new PickAppleDto(existingTree.plantedBy, existingTree.variety, existingTree.index);

  // When
  const response = await contract.PickApple(ctx, dto);

  // Then
  expect(response).toEqual(transactionSuccess());
  expect(writes).toEqual(writesMap(plainToInstance(AppleTree, {
    ...existingTree,
    applesPicked: existingTree.applesPicked.plus(1)
  })));
});
```

In our case a tree has apples if a given time passes. That's why we start from a tree that was planted two years ago.

During validation, we assert that the response from picking an apple is successful, and the change to the blockchain state (`writes`) is overriding current apple tree with the updated picked apples count.

## 6.1.2 Using `fixture` for regular functions

`fixture` can be used for regular functions as well, without the need to call contract methods directly. However, the `ctx` parameter is tied to the contract, and you must provide any contract class, such as `AppleContract` or any class that extends `GalaContract` from the `@gala-chain/chaincode` package.

```
import { ChainUser } from "@gala-chain/client";
import { fixture, writesMap } from "@gala-chain/test";
import { GalaContract } from "@gala-chain/chaincode";
import { AppleTreeDto, AppleTreesDto } from "../dtos";
import { Variety } from "../types";
import { AppleTree } from "../AppleTree";
import { plantTrees } from "../plantTrees";

class TestContract extends GalaContract {
  constructor() {
    super("TestContract", "0.0.1");
  }
}

it("should allow to plant trees", async () => {
  // Given
  const user = ChainUser.withRandomKeys();

  const {ctx, writes} = fixture(TestContract).callingUser(user);

  const dto = new AppleTreesDto([
    new AppleTreeDto(Variety.GALA, 1),
    new AppleTreeDto(Variety.MCINTOSH, 2),
  ]);

  const expectedTrees = dto.trees.map(t => new AppleTree(user.identityKey, t.variety, t.index, ctx.txUnixTime));

  // When
  const response = await plantTrees(ctx, dto);

  // Then
  expect(response).toEqual(expectedTrees);

  await ctx.stub.flushWrites();
  expect(writes).toEqual(writesMap(...expectedTrees));
});
```

Using `fixture` for regular functions is useful when you want to test the behavior of the function without the need to call the contract method. However, if you want to verify writes, you need to explicitly call `contract.afterTransaction` or `ctx.stub.flushWrites` method. This is required, because all writes actually are added to internal cache, and are executed after the contract method is successfully executed.

## 6.1.3 Additional notes

### Signatures

In most transactions, DTOs require a `secp256k1` signature to verify the identity of the user invoking the contract method. When using `fixture`, there's no need to provide a signature as it's handled automatically.

### `beforeTransaction` and `afterTransaction`

In the context of testing contract methods with `fixture`, you don't need to manually call `contract.beforeTransaction` and `contract.afterTransaction` methods; they are invoked automatically.

## 6.2 Integration testing

The `@gala-chain/test` package, combined with the `@gala-chain/client` package, provides utilities for integration testing your chaincode. The primary objective of integration or end-to-end tests is to call transactions on the actual Hyperledger Fabric network and verify the results.

The recommended library for tests is [Jest](#).

## 6.2.1 Writing integration tests

Assume you have a contract `AppleContract` with the following methods:

```
export class AppleContract extends GalaContract {
  public async PlantTrees(ctx: GalaChainContext, dto: AppleTreesDto): Promise<void> { ... }
  public async FetchTrees(ctx: GalaChainContext, dto: FetchTreesDto): Promise<PagedTreesDto> { ... }
  public async PickApple(ctx: GalaChainContext, dto: PickAppleDto): Promise<void> { ... }
}
```

Let's write tests for the following scenarios: 1. Plant a bunch of trees 2. Fetch GALA trees planted by a user 3. Fail to pick a `GOLDEN_DELICIOUS` apple because tree is too young

Note: `AppleContract` with the referenced implementation and all relevant tests (file: `e2e/apples.spec.ts`) are available in chaincode template.

### Setup

Before writing integration tests, ensure you have a running GalaChain network. You can use the `npm run network:start` command provided by the chaincode template to start a local network in dev mode with hot-reload enabled.

Integration tests are executed against the running network, which is not recreated after each test. To make tests independent, you may need to randomize test data or clean up the data on the chain after tests.

In our case for apples, we use random users defined at the test suite level to create different users for each run, ensuring test suite independence. However, each test in the suite uses the same user and is not independent. Thus, we use scenario-like testing in the apples test suite, and each test is dependent on the previous one.

Also, since we are using the running network, we need a client to interact with the network. It needs to be connected to the network, and it needs to be disconnected after the tests are finished.

Here is an example of the test setup:

```
import { AdminChainClients, TestClients, transactionErrorKey, transactionSuccess, } from "@gala-chain/test";
import { GalaChainResponse } from "@gala-chain/api";
import { ChainClient, ChainUser } from "@gala-chain/client";
import { AppleTreeDto, AppleTreesDto, FetchTreesDto, PagedTreesDto, PickAppleDto, Variety } from "../src/apples";

describe("Apple trees", () => {
  const appleContractConfig = {apples: {name: "AppleContract", api: appleContractAPI}};
  let client: AdminChainClients<typeof appleContractConfig>;
  let user: ChainUser;

  beforeAll(async () => {
    client = await TestClients.createForAdmin(appleContractConfig);
    user = await client.createRegisteredUser();
  });

  afterAll(async () => {
    await client.disconnect();
  });
  ...
});
```

### Optional setup -- custom API

By default `client` is not aware of your chaincode and types, providing only generic methods for submitting or evaluating transactions:

```
submitTransaction(method: string): Promise<GalaChainResponse<unknown>>;
submitTransaction(method: string, dto: ChainCallDTO): Promise<GalaChainResponse<unknown>>;
submitTransaction<T>(method: string, resp: ClassType<Inferred<T>>): Promise<GalaChainResponse<T>>;
submitTransaction<T>(method: string, dto: ChainCallDTO, resp: ClassType<Inferred<T>>): Promise<GalaChainResponse<T>>;

evaluateTransaction(method: string): Promise<GalaChainResponse<unknown>>;
evaluateTransaction(method: string, dto: ChainCallDTO): Promise<GalaChainResponse<unknown>>;
evaluateTransaction<T>(method: string, resp: ClassType<Inferred<T>>): Promise<GalaChainResponse<T>>;
evaluateTransaction<T>(method: string, dto: ChainCallDTO, resp: ClassType<Inferred<T>>): Promise<GalaChainResponse<T>>;
```

They are generic, and you need to provide a method name, and optionally a DTO and response type to deserialize the response to a proper type. But you can define a custom API, that will be aware of your chaincode and types.

If you choose not to use a custom API, you can create a test client as follows:

```
const appleContractConfig = {apples: "AppleContract"};
let client: AdminChainClients<typeof appleContractConfig>;
...
beforeAll(async () => {
  client = await TestClients.createForAdmin(appleContractConfig);
  ...
})
```

This way you will be able to use only the generic methods to call chaincodes: `client.apples.evaluateTransaction(...)` or `client.apples.submitTransaction(...)`.

However, defining a custom API offers type-safe calls, as demonstrated in the apples test suite. You can define it as follows:

```
interface AppleContractAPI {
  PlantTrees(dto: AppleTreesDto): Promise<GalaChainResponse<void>>;
  FetchTrees(dto: FetchTreesDto): Promise<GalaChainResponse<PagedTreesDto>>;
}

function appleContractAPI(client: ChainClient): AppleContractAPI {
  return {
    PlantTrees(dto: AppleTreesDto) {
      return client.submitTransaction("PlantTrees", dto) as Promise<GalaChainResponse<void>>;
    },
    FetchTrees(dto: FetchTreesDto) {
      return client.evaluateTransaction("FetchTrees", dto, PagedTreesDto);
    }
  };
}
```

And provide it for client creation:

```
const appleContractConfig = {apples: {name: "AppleContract", api: appleContractAPI}};
let client: AdminChainClients<typeof appleContractConfig>;
...
beforeAll(async () => {
  client = await TestClients.createForAdmin(appleContractConfig);
  ...
})
```

And it allows you to use type-safe calls, defined in the API, like `client.apples.PlantTrees(...)` or `client.apples.FetchTrees(...)`.

### Test 1. Plant a bunch of trees

```
test("Plant a bunch of trees", async () => {
  // Given
  const dto = new AppleTreesDto([
    new AppleTreeDto(Variety.GALA, 1),
    new AppleTreeDto(Variety.GOLDEN_DELICIOUS, 2),
    new AppleTreeDto(Variety.GALA, 3),
  ])
  .signed(user.privateKey, false);

  // When
  const response = await client.apples.PlantTrees(dto);

  // Then
  expect(response).toEqual(transactionSuccess());
});
```

In this test case, we create a DTO with three trees to plant. We sign the DTO with the user's private key to prove the identity of the user. This is required, in contrast to unit tests.

Then we call `PlantTrees` method, defined in our custom API, and we assert that the response is successful.

As a result the test writes three trees to the blockchain, planted by the user. We will use them in the next test.

### Test 2. Fetch GALA trees planted by a user

```
test("Fetch GALA trees planted by a user", async () => {
  // Given
  const dto = new FetchTreesDto(user.identityKey, Variety.GALA)
  .signed(user.privateKey, false);

  // When
  const response = await client.apples.FetchTrees(dto);

  // Then
  expect(response).toEqual(transactionSuccess({
```

```

trees: [
  expect.objectContaining({plantedBy: user.identityKey, variety: Variety.GALA, index: 1}),
  expect.objectContaining({plantedBy: user.identityKey, variety: Variety.GALA, index: 3})
],
bookmark: ""
}))
})

```

In the previous test, we planted three trees, two of them are GALA. In this test, we fetch all GALA trees planted by the user. The response contains two trees, planted by the user, and the bookmark for fetching next page (though in this case, it's empty).

### Test 3. Fail to pick a GOLDEN\_DELICIOUS apple because tree is too young

```

test("Fail to pick a GOLDEN_DELICIOUS apple because tree is too young", async () => {
  // Given
  const dto = new PickAppleDto(user.identityKey, Variety.GOLDEN_DELICIOUS, 2)
    .signed(user.privateKey, false);

  // When
  const response = await client.apples.PickApple(dto);

  // Then
  expect(response).toEqual(transactionErrorKey("NO_APPLES_LEFT"));
});

```

In this test case, we try to pick an apple from the tree that was planted in the first test. However, the tree is too young, so we expect an error.

These examples provide a comprehensive guide for unit and integration testing of GalaChain smart contracts using the `@gala-chain/test` package. Adjust and expand the provided code snippets based on your specific contract implementations and testing requirements.



## 7. Chaincode deployment

---

**NOTE:** Features described on this page are not yet available in GalaChain CLI. This page describes the future functionality and is subject to change.

Chaincode is published as a Docker image to GalaChain repository. Once the image is published, it can be deployed to GalaChain testnet or mainnet. In order to publish and deploy chaincode, you need to contact GalaChain support and add provide your secp256k1 public key.

### 7.1 The process

---

1. Provide to GalaChain support chaincode information and public keys, then connect the chaincode with:

```
galachain connect
```

2. Build and publish chaincode Docker image.
3. Deploy the chaincode to testnet or mainnet:

```
galachain [test-]deploy <image-tag>
```

4. Fetch information about the chaincode and deployments:

```
galachain info
```

### 7.2 Reference

---

GalaChain CLI calls some local command and accesses ServicePortal REST API to accomplish certain tasks. Each REST request body to ServicePortal (1) is signed using our default GalaChain signature type (secp256k1, non-DER), and (2) contains unique request id. Both signing and creating the ID is managed by GalaChain CLI.

#### 7.2.1 Connecting the chaincode

---

Once you have generated secp256k1 key pair, you should send the following data to GalaChain support:

- Org name
- Channel name
- Chaincode name
- List of secp256k1 public keys that are allowed to deploy a chaincode to testnet
- List of secp256k1 public keys that are allowed to deploy a chaincode to mainnet

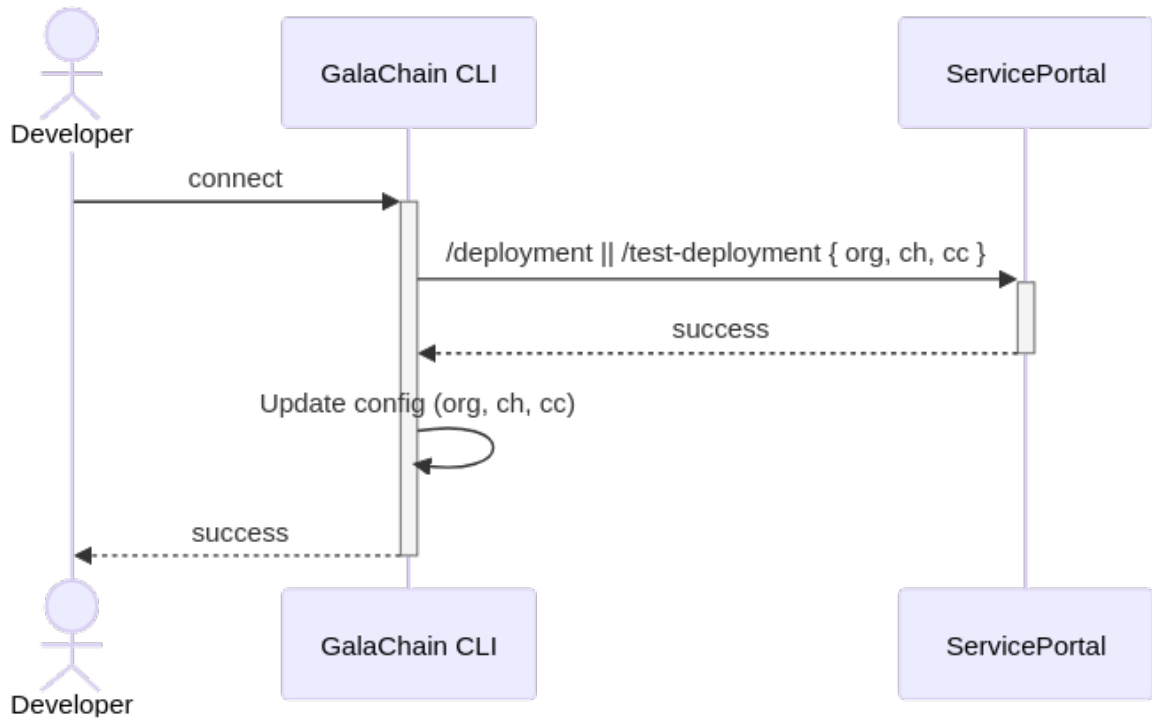
This is an off-line process. Once you send the data, GalaChain support will ask you about some details, to ensure the data is not corrupted.

Tip: you can use `galachain keygen <path>` command to create a valid key pair.

Then you need to call in the chaincode directory:

```
galachain connect <org-name> <channel-name> <chaincode-name>
```

This way GalaChain CLI will verify your public key is authorized to deploy chaincodes, and it will create a configuration file in root project directory ( `.galachainrc` ) containing org, channel and chaincode names. This file should be added to your version control system. Also most of `galachain` commands that manage the chaincode require this file to get information about chaincode metadata.

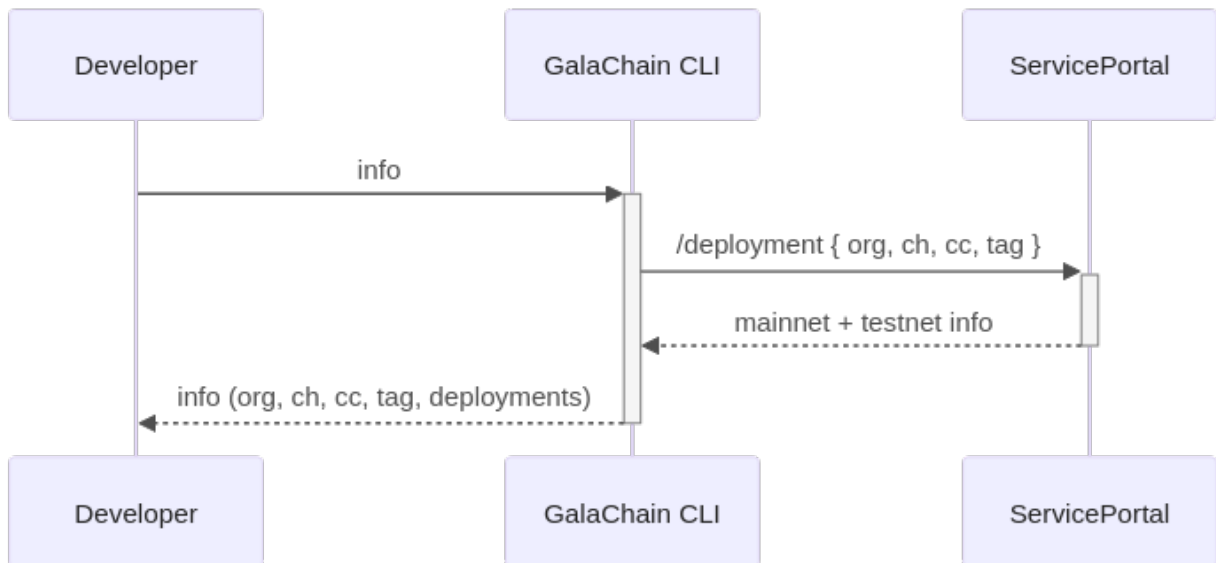


7.2.2 Fetching information about chaincode and deployments

```
galachain info
```

This command will display:

- Org, channel, chaincode names (from `.galachainrc` file)
- Tags available for deployment (from `.galachainrc` file)
- Information about deployment to testnet (if applicable)
- Information about deployment to mainnet (if applicable)



## 7.2.3 Deploying the chaincode

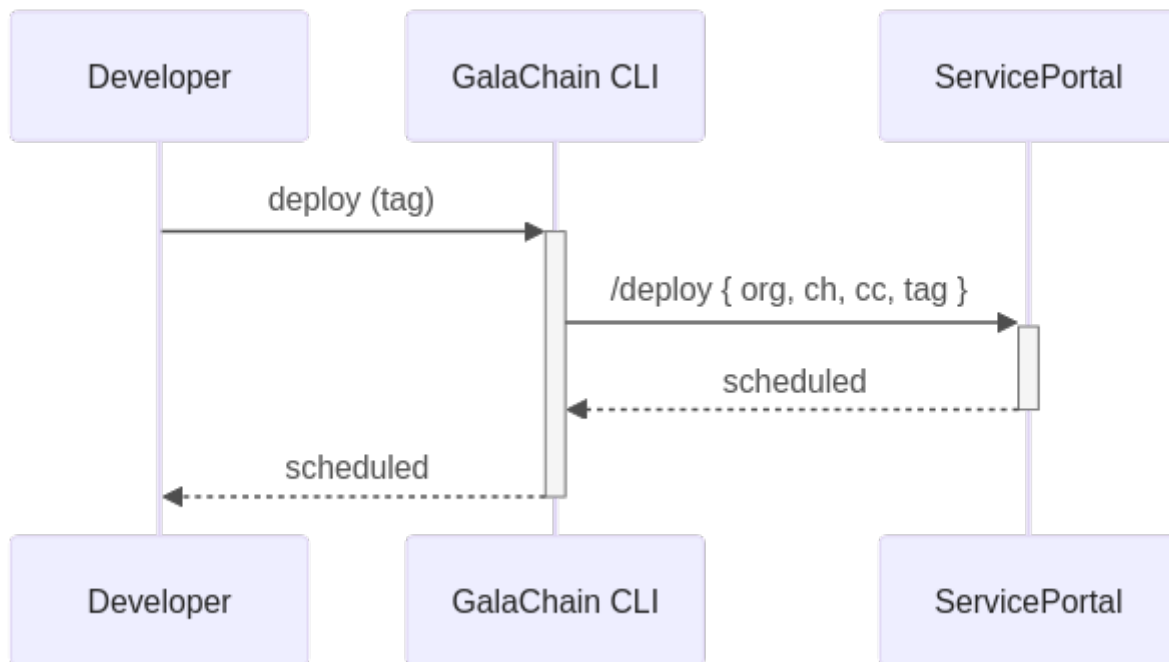
Deploying to GalaChain testnet:

```
galachain test-deploy <image-tag>
```

Deploying to GalaChain mainnet:

```
galachain deploy <image-tag>
```

This command schedules deployment of published chaincode Docker image to GalaChain testnet or mainnet. In order to get the information about the current status of deployments, you need to use `galachain info` command.



## 8. Chaincode Post Deployment

---

Assuming a brand new channel is deployed after following the steps in [chaincode-deployment.md](#).

### 8.1 How to create keys

---

Use the chain-cli command to generate a secp256k1 key pair (or alternatively, use a Node.js library such as `@noble/secp256k1` or `ethers`).

```
galachain keygen file_name
```

Using the command above both public and private key will be generated in the provided path. The public key will have the suffix `.pub`.

*Details on how to install the chain-cli can be found in [getting-started.md](#).*

### 8.2 How to generate a new encryption key

---

Choose one of the options below.

1. Generate a strong password using a password vault (e.g. Bitwarden, LastPass, KeepassXC).
2. Hash the generated private key.

The encryption key is used as the `x-user-encryption-key` header, and is an important part of GalaChain authorization flow. Security best practices dictate that it should be a strong key.

### 8.3 How to create a new curator user

---

Use `GC_ADMIN` to create at least one new account (e.g. `GAME_ADMIN`) in the curator org.

```
curl --location 'http://{CHAINCODE_URL}/api/identity/curator-user' \
--header 'accept: application/json' \
--header 'Content-Type: application/json' \
--header 'x-identity-user-id: GC_ADMIN' \
--header 'x-user-encryption-key: GC_ADMIN' \
--data '{
  "userId": "GAME_ADMIN",
  "identityEncryptionKey": "strong-generated-key"
}'
```

### 8.4 How to save the generated public key for the new curator user

---

Substitute the placeholder values in the sample curl command below with the generated curator user id, encryption key and public key to make a successful request.

```
curl --location 'http://{CHAINCODE_URL}/api/{CHAINCODE_NAME}/public-key-contract/RegisterUser' \
--header 'accept: application/json' \
--header 'Content-Type: application/json' \
--header 'x-identity-lookup-key: GC_ADMIN' \
--header 'x-user-encryption-key: GC_ADMIN' \
--data '{
  "publicKey": "0454d15528f41819cb77816ddd7f76f753de0ae425680d1055c043d18be0eeb369e122e3b44e1c0184619754ffa23c2d3f1945cee8e7b46f95b401b1fe69baefb",
  "signature": "MEYCIQDf3m2pVAcM2CBmev3070TPu+FQzhMlQRg2VCGkUGv01wIhALF1zbanCGAr04AeALtmAKqGPxk1nobLMwFX+VoiDb0B",
  "user": "service|GAME_ADMIN"
}'
```

**The signature should be generated using the private key of the `GC_ADMIN` in this case because the signer has to already be registered. See how to sign a DTO [here](#).**

Note that the `user` requires a prefix of `service|` for curator users.

## 8.5 How to add the new curator user as an authority on a token

```
curl --location 'http://{CHAINCODE_URL}/api/{CHAINCODE_NAME}/token-contract/CreateTokenClass' \
--header 'accept: application/json' \
--header 'Content-Type: application/json' \
--header 'x-identity-lookup-key: service|GAME_ADMIN' \
--header 'x-user-encryption-key: strong-generated-key' \
--data '{
  "tokenClass": {
    "collection": "ChainCli2",
    "category": "Sample2",
    "type": "ffxc7xyh2",
    "additionalKey": "v9dbrgop2"
  },
  "name": "ChainCliSampleToken1234",
  "symbol": "CHCHCHAINSS",
  "description": "Mostly-randomly generated sample DTO created with chain dto generate.",
  "image": "http://app.gala.games/chain-cli-test-data",
  "metadataAddress": "qui",
  "totalBurned": "0",
  "maxCapacity": "100000000",
  "contractAddress": "deserunt incididunt",
  "totalSupply": "0",
  "maxSupply": "100000000",
  "isNonFungible": false,
  "rarity": "TWiSx",
  "authorities": [
    "client|GAME_ADMIN",
    "client|GC_ADMIN"
  ],
  "totalMintAllowance": "0",
  "network": "GC",
  "decimals": 1,
  "signature": "MEQCIyFyNwLSofTdpj1vt9m9M/1v91e1e696/SP9GLbrCP0zAiBe3K+6i0wY100hNb+pAfn0Y6o12gT+4QRSF0qDnoI4Q=="
}'
```

Note that while the signature field is optional for the DTO class definition generally, it is required for this Write/Submit transaction to be executed on chain.

**It is strongly recommended to save at least two users as authorities on every token class. Only token authorities have the ability to update existing TokenClass objects on chain, so create at least two to have a backup in case of private key loss.**

## 8.6 How to sign a DTO

It's necessary to have a private key generated by `galachain keygen` to use this command. Leave the signature field in the provided DTO empty - the convenience of this command is that it will sign the DTO, generate the signature, and populate the field for you.

Then you can use the command `galachain dto:sign` to get the response with your DTO containing the signature field.

Example:

```
galachain dto:sign data/privateKey '{
  "tokenClass": {
    "collection": "CLITest",
    "category": "Currency",
  }
}'
```

or

```
galachain dto:sign data/privateKey dto.json
```

The command will normalize your private key and create a signature based on the DTO and the normalized private key using the `secp256k1` cryptography. The signature is encoded to base64 and added to the signature field.

Note that if you like to sign DTOs on your own, it's important to know the DTO should be deterministic, so different peers will always interpret them the same. The reason and the solution for that can be found [here](#).

## 9. Hackathon

---

### 9.1 Deploy

---

#### 9.1.1 Experimental! Deploy your chaincode

For the first time we're able to provide you with the ability to deploy chaincode and make it public. This is an experimental feature, there might be some glitches, and at some point all the data will be probably removed.

How to deploy:

1. Build and publish your chaincode as a docker image in public repo (for instance DockerHub, GitHub registry or GitLab registry). Remember to `docker login` before pushing.

Sample for GitLab:

```
IMG_TAG=registry.gitlab.com/<your-username>/my-gc-chaincode:0.0.1
docker buildx build . -t "$IMG_TAG" -o type=image --platform=linux/amd64
docker push "$IMG_TAG"
```

Provide us the image name (everything before the `:` character of full docker tag). In the sample above it is the content of `IMG_TAG` var without `:0.0.1` part.

1. Provide us your secp **public** key for chaincode admin, and secp **public** keys for all developers. You can generate some with the command:

```
galachain keygen gc-admin-key
galachain keygen gc-dev-key
```

The above command creates a private keys in `./gc-admin-key` and `./gc-dev1-key`, and public keys in `./gc-key.pub`, `./gc-dev-key.pub`. We need the content of `*.pub` files for chaincode admin user and for all developers who want to deploy. Keep **private** keys safe, they will be needed later.

1. Once we register your public keys, you will be able to connect your chaincode with GalaChain. To do it, navigate to the root directory of your chaincode and call the following command, providing path to developer private key:

```
galachain connect <path-to>/gc-dev-key
```

You should see the message that confirms you are connected:

```
You are now connected! Chaincode gc-<eth-addr-from-admin-pub-key>
```

1. If your docker image is published, and your chaincode is connected, you can deploy it to our sandbox environment with the command:

```
galachain deploy <docker-image-tag> <path-to>/gc-dev-key
```

Note: you need to provide docker image name and also the version part.

1. You can check the status of your deployment with the command:

```
galachain info <path-to>/gc-dev-key
```

Once the status is `CC_DEPLOYED` you can visit the Swagger webpage: <https://gateway.stage.galachain.com/docs/>. You can find your chaincode ( `gc-<eth-addr>` ). If the version is still unknown (and you see `v?.?.?`), it means you may need to wait a couple of minutes till the chaincode is ready.

Once it is ready, you can use the webpage to call chaincodes. It's good to start `PublicKeyContract/GetPublicKey` with empty object as request body. It should return the admin public key you provided before.

## 9.1.2 GC support internal notes

---

To register a user, go to <https://gitlab.com/gala-games/chain/platform/infrastructure-api/-/pipelines/new> and provide:

- Run for branch name or tag: `register-user`
- Variable key: `CHAINCODE_IMAGE_NAME` and value: provided image name from the participant (should not contain `:`)
- Variable key: `CHAINCODE_ADMIN_PUBLIC_KEY` and value: provided key from the participant
- Variable key: `CHAINCODE_DEV_PUBLIC_KEYS` and value: provided keys from participant, separated by a single space

Then run the pipeline and wait till it ends. If the output contains error response, it probably means, something was wrong with the input.

## 9.2 Hackathon

---

As this is our second GalaChain hackathon, there might be some rough edges and chaos, but hey, that's what makes a good hackathon.

## 9.3 Schedule

---

The Hackathon will be **48 Hours** held on **February 12-14th, 2024**

Time (CST)	Activity
10:00 AM	Start!
10:00-11:00	Meet in the GalaChain Discord
11:00-10:00 (next 48 hours)	Hack!
10:00 AM	Hackathon presentations on Discord Stage, or send us a 10 min recording to highlight your hack-o-licious project!
After presentations/recordings have been viewed.	Winners will be announced in GalaChain Announcements via Discord.

## 9.4 Rules

---

There aren't many, but the standard rules we use in our Discord and in our EULAs apply. It's pretty simple: No warranties on the software of any kind (this software is still in development) and be kind. We reserve the right to kick anyone out, but just be nice to your fellow developers and we should all get along.

We have have 2 engineers judging: Jakub Dzikowski and Jeff Eganhouse. But! Rest assured the whole GalaChain team will be putting thier two cents in.

## 9.5 Prizes

---

We'll be awarding everyone an Epic participation NFT. If your team wins, your entire team will get a Legendary NFT in addition to the participation NFT. Let the bragging rights begin!

## 9.6 Atmosphere

---

1. We will be conducting this hackathon in our GalaChain [Discord](#).
2. Each team will have their own private room with voice, text and screen sharing capabilities.
3. Don't have a team? Don't panic. Meet us in Discord using the above link. We will help find you a great team.
4. If you need engineering support, head to the discord link above and let the engineers on duty know you need assistance. Then, someone will pop into your private room to help out.

## 9.7 Getting Started

---

First, pull down the [Public SDK](#) onto your machine.



Next, here's a helpful flow to get you developing:

1. Read the [Getting started guide](#). If you get stuck contact a Gala engineer in the GalaChain General Discord chat.
2. Use the CLI to init a project from template and start a local environment
3. Use the samples in e2e tests and our reference docs for token operations to design the app flow
4. Use unit tests or any code/scripts to interact with the chain
5. Rinse, repeat until you're happy with your hack.
6. [Deploy](#) your code to the GalaChain sandbox.

## 9.7.1 Hackathon Ideas

---

Are you stuck on what to code up? Here's some ideas to get you started:

- Decentralized Marketplace for NFTs:
  - Create a marketplace where users can list, buy, and sell NFTs.
  - Implement features like bidding, auctions, and royalty mechanisms for artists.
  - Enable users to create and manage their own NFT collections.
- P2P loan platform:
  - Build a lending platform where users can request and offer loans using tokens as collateral.
  - Implement features like interest rates, loan durations, and automated repayment mechanisms.
- Fractional ownership of NFTs:
  - Allow users to purchase fractions of high-value NFTs, enabling broader access to expensive assets.
  - Implement mechanisms for managing fractional ownership, including voting, revenue sharing, and buyout options.
- Staking and yield farming:
  - Create a staking platform where users can lock up tokens to earn rewards over time.
  - Integrate yield farming mechanisms to incentivize liquidity provision and participation in the ecosystem.
- Cross-channel swaps:
  - Develop a mechanism that allows users to swap tokens between different channels.
  - In the hackathon we will use just one channel, but we can design the flow to behave like it were two channels networks (esp. design the process in a way to avoid corrupted state, support rollbacks etc.) .
- NFT-backed governance and voting:
  - Build a governance platform where NFT holders can vote on proposals related to the ecosystem.
  - Implement mechanisms to weight votes based on NFT rarity or ownership duration.
- NFT-backed loans:
  - Create a system where users can use their NFTs as collateral to borrow tokens.
  - Implement mechanisms for assessing NFT value, liquidation in case of default, and repayment terms.
- NFT-backed insurance:
  - Create a system where users can insure their valuable NFTs against theft, loss, or damage.
  - Implement mechanisms for assessing risk, determining premiums, and processing claims.
- GalaChain attack:
  - Find flaws and/or security issues with our current operations on chain, like auth, token operations, allowances, mints, transfers
- GalaChain race:
  - Push GalaChain speed limits by attempting to max out TPS with data that is realistic (might not be good if everyone is on one channel tho)
- Get an Open Source game and enhance it with NFT
- Find an FPS game in github and make it use an NFT gun or armor

That's it. Have Fun and Happy Hacking!